

สี่ทลอตา

พระนิพนธ์ใน สมเด็จพระเจ้าฟ้าบรมพิตรสุยมหิณทร์

2

7

3

15

20

3

27

35

43

48

53

59

65

สี่ท่อน
Trombone 1

72



78



83



87



91



96



102



107



111



117



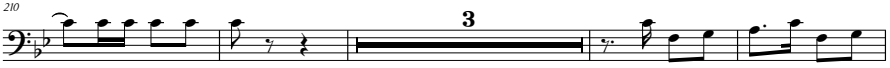
123



สี่ล่อตา
Trombone 1



สี่ล่อตา
Trombone 1



สี่ล่อทา
Trombone 1



สี่ล่อทา
Trombone 1

432



439



447



454



463



471



477



484



491



500



507



สี่ล่อตา
Trombone 1

ส่วนขึ้น ท่อน ๒

Musical score for Trombone 1, measures 1-78. The score is written in bass clef with a key signature of one flat (B-flat) and a time signature of 2/4. The piece is titled "สี่ล่อตา" (Si Lo Ta) and is for Trombone 1. The score is divided into measures, with measure numbers 6, 12, 24, 32, 37, 45, 51, 57, 64, and 71 indicated. The score includes various musical notations such as notes, rests, slurs, and dynamic markings. A double bar line with repeat dots is used at measure 12. A first and second ending bracket is used at measure 24. A fermata is placed over measure 32. A first and second ending bracket is used at measure 37. A first and second ending bracket is used at measure 45. A first and second ending bracket is used at measure 51. A first and second ending bracket is used at measure 57. A first and second ending bracket is used at measure 64. A first and second ending bracket is used at measure 71. The score ends with a double bar line and repeat dots at measure 78.

ສິດລອດາ
Trombone 1

79

85

92

98

104

110

117

125

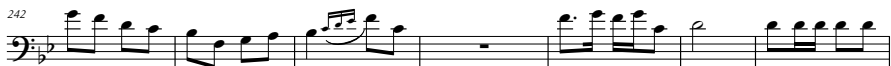
131

136

สี่ท่อน
Trombone 1



สี่ท่อน
Trombone 1



สี่ท่อน
Trombone 1



สี่เลอทา
Trombone 1

สองชั้น ทิว ◦

2

7

4

16

3

23

2

31

2

39

45

51

pp

57

63

70

77

สี่ล่อทา
Trombone 1



สี่ท่อน
Trombone 1

168



177



186



192



199



207



216



224



233



241



249



สี่ลลอลทา
Trombone 1

สองชั้น 2



10



18



26



34



42



50



58



67



74



81



88



สี่ท่อน
Trombone 1



ສິດທອດາ
Trombone 1

ສິດທອດາ ກ່ອນ ໑

The musical score for Trombone 1 consists of ten staves of music. The key signature is one flat (B-flat) and the time signature is 2/4. The score begins with a rest for the first measure, followed by a series of eighth and sixteenth notes. The music features various rhythmic patterns, including eighth-note runs, sixteenth-note passages, and rests. The score is marked with measure numbers 8, 14, 20, 26, 34, 40, 47, 54, 61, 68, and 75. The notation includes stems, beams, and various note heads, with some notes having slurs or accents. The score concludes with a double bar line and repeat dots.

สี่ท่อน
Trombone 1

82



89



96



104



110



116



122



128



134



140



146



สี่เลอตา
Trombone 1

ขึ้นด้วย ท่อน ๒

8

15

22

28

35

43

51

59

68

76

82